

**Original Directflo® Technology**

**1 1/2"**  
**66 US gal/min**  
250 l/min

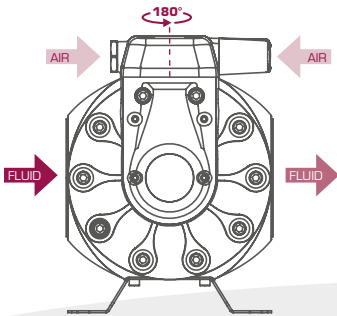
**DF250 METAL PUMPS**

High flow air operated double diaphragm pumps for dosing, spraying, transferring, evacuating and distributing a wide variety of fluids.

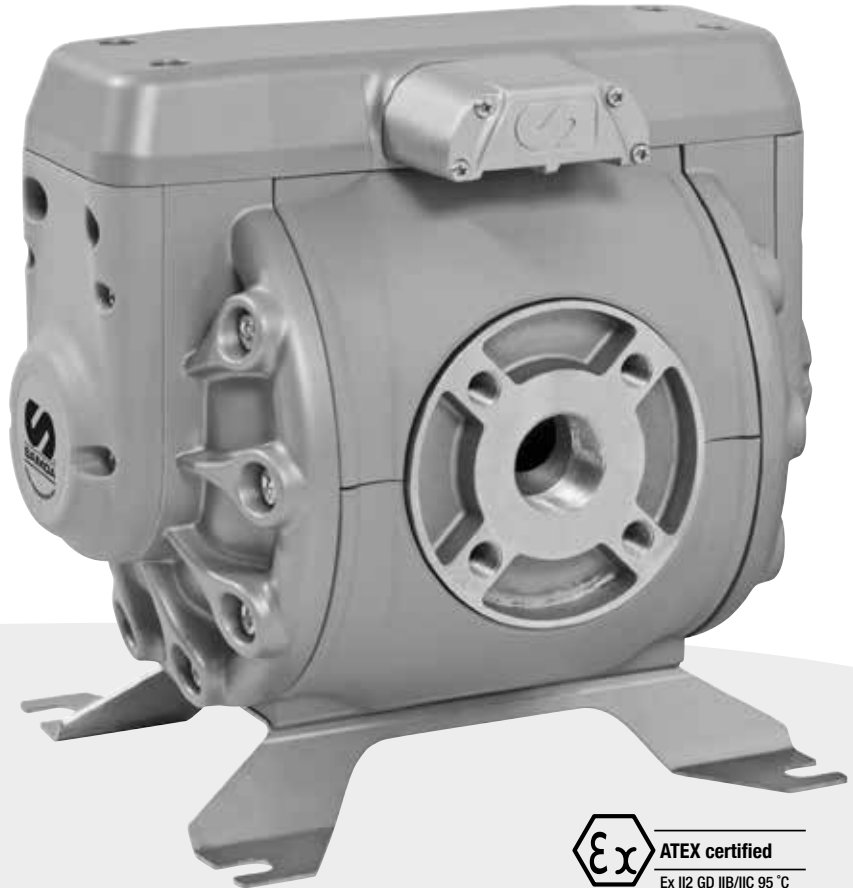
Ideal for standard applications with high flow rates.

Very robust metal pumps designed for the toughest applications.

Fully groundable ATEX certified pumps for use in potentially explosive atmospheres (Ex II2 GD IIB/ IIC 95 °C).



Orientable air inlet, increased installation flexibility.



**RECOMMENDED MODELS**

MODEL	PUMP BODY	DIAPHRAGMS	BALLS	SEATS	OTHER WETTED MATERIALS	RECOMMENDED APPLICATIONS	
DF250AASNSNNBAS	Aluminum	Buna-N	Buna-N	Stainless Steel	-	ATEX pump. Coolant, new and waste oil, cutting fluids, diesel.	Ex
DF250AASVSTHBAS	Aluminum	TPE	PTFE	Stainless Steel	FKM	ATEX pump. Coolant fluids, oil, water and Ph neutral aqueous solutions, bilge water, hydraulic fluids.	Ex
DF250AAESESTMBAS	Aluminum	Santoprene®	PTFE	Stainless Steel	EPDM	ATEX pump. Water based flexo and gravure inks and paint. Some types of glue.	Ex
DF250AASTSTTBAS	Aluminum	PTFE	PTFE	Stainless Steel	-	ATEX pump. Chemicals compatible with stainless steel and aluminum. Solvents (ketones, acetates and aldehydes, aliphatic and aromatic hydrocarbons) and solvent based paint, inks and varnishes. NOT FOR CHLORINATED HYDROCARBON SOLVENTS.	Ex
DF250AASTSSTBAS	Aluminum	PTFE	Stainless Steel	Stainless Steel	-	ATEX pump. Chemicals compatible with stainless steel and aluminum. Solvents (ketones, acetates and aldehydes, aliphatic and aromatic hydrocarbons) and solvent based paint, inks and varnishes. Stainless steel balls allow its use with higher viscosity fluids. NOT FOR CHLORINATED HYDROCARBON SOLVENTS.	Ex

**WARNING: DO NOT USE aluminum body pumps with halogenated hydrocarbon solvents.**