

Stocklube® Systems

Graymills Stocklube Systems provide neat, controlled lubrication of coil or strip stock. They save time, save lubricant, extend die life and prevent slippery floor hazards. Stocklube systems eliminate inefficient hand-brushing and messy containers. Ruggedly constructed to complement press speeds up to 300 FPM.

STOCKLUBE SYSTEM FEATURES

The systems consist of a lubricating head assembly and a pump and tank unit. Lubricating heads are available in three sizes for maximum sheet width of 6", 12" and 24" and are adjustable for stock thickness up to 3/16".

Clean, uniform lubrication reduces die wear

The stock is coated with lubricant as it passes through application rollers operating under spring tension. Excess lubricant is squeezed off by the wiper rollers and drains to the pump reservoir where it is filtered and recirculated to the head. Stocklube heads are easily adjusted to lubricate stock up to 3/16", either top, bottom or both sides simultaneously.

Uniform lubricant flow is easily adjusted with convenient manifold needle valves. In addition, the wiper rollers tend to clean dirt from the stock surface to keep foreign material from damaging dies. Dual manifold needle valves provide finger tip adjustment of the lubricant flowing on to the stock. This control allows operation at various production speeds.

Choice of steel or urethane rollers

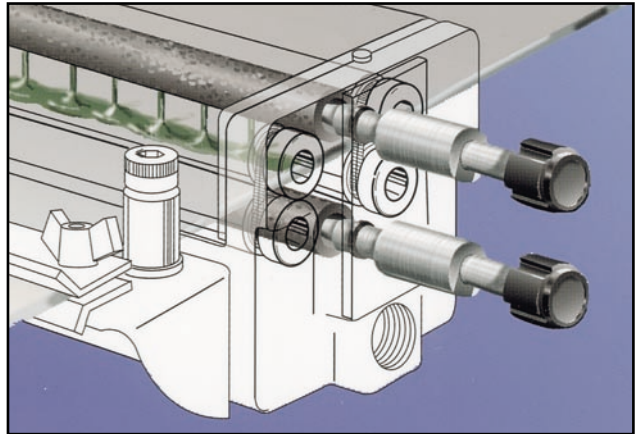
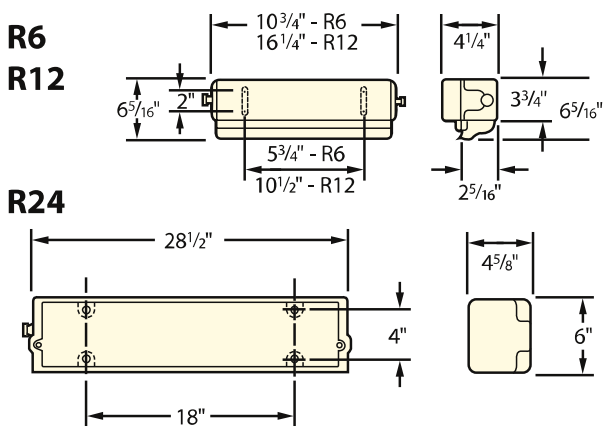
Smooth steel rollers are standard with Graymills Stocklube Systems. Optional urethane-covered rollers are available for uniform lubricant distribution on stock with slightly irregular surfaces or burred edges.

Choice of centrifugal or gear pump systems

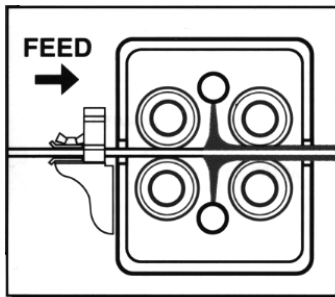
Centrifugal pump systems are for use with light oils and water-soluble mixtures up to 500 SSU. They will handle fluids containing abrasives or scale. For complete information, see FM 60 Series centrifugal pumps, page 11.

Gear pump systems are for use with heavier lubricants (up to 5000 SSU) which are free of abrasives or scale. For complete pump information, see SG2 and SG4 Series gear pumps on page 20.

R6, R12, R24



Dual manifold needle valves provide finger tip adjustment of the lubrication flowing on to the stock. This control allows operation at various production speeds.



Independent manifold valves permit application of lubricant to either top, bottom or both sides simultaneously. There is no waste with a Graymills Stocklube System because unused lubricant is recirculated.