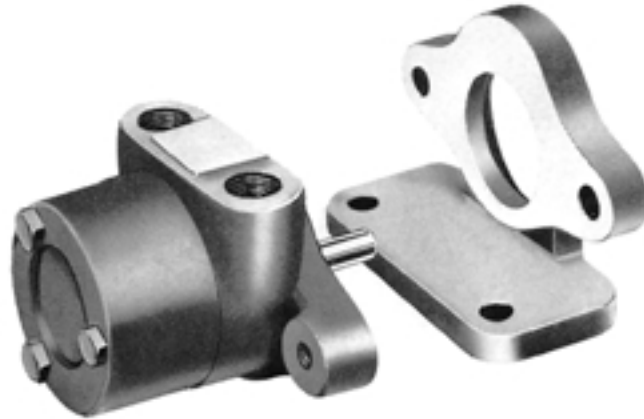


# BSM ROTARY GEAR PUMPS

## 00-SERIES



The 00-Series pump is ideally suited for low volume applications such as pressure lubrication, hydraulic service, fuel supply, and general liquid transfer.

**Design:** Drive speeds to 1800 rpm; discharge pressures to 300 psi; flow rate to .5 gpm; foot or flange mounted.

**Material:** Cast Iron casings with precision machined, heat treated gears and case hardened shafts. Pumps are also available in Ductile Iron.

**Bearings:** Plain.

**Seal:** Lip Seal.

**Lubrication:** Self lubricating using the pumped liquid. Also available for handling non-lubricating liquids.

**Rotation:** Clockwise or counter-clockwise. Discharge is on the side of the pump opposite that toward which the shaft rotates.

**Liquid Viscosities:** 32 ssu to 1750 ssu. Clean liquids having good lubricating qualities. Adaptable for handling liquids of higher or lower viscosities.

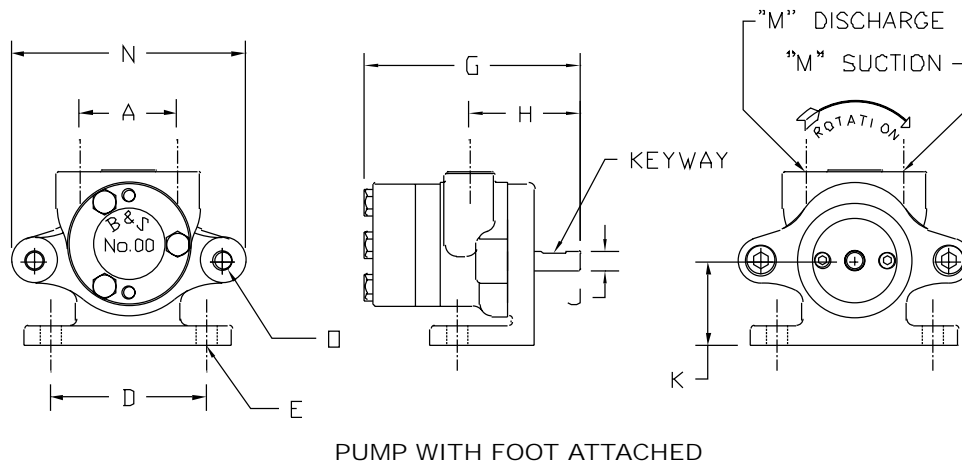
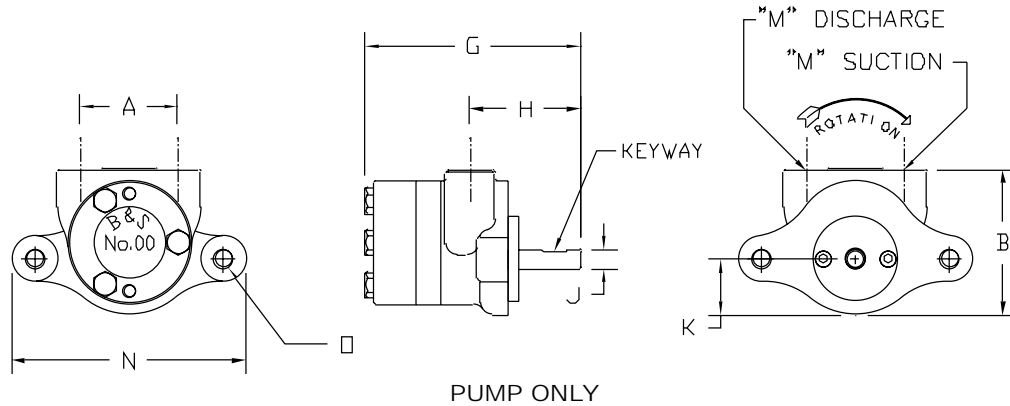
**Suction Lift:** Up to 28" Hg / 31 feet depending on the type of liquid being pumped.

**Drive Options:** A-Drive (pump connected to c-face motor with adapter bracket and coupling); D-Drive (pump coupled to motor mounted on baseplate).

**Accessories:** Repair Kits; Gear Sets; and Seal Kits. Refer to Section 13.

# BSM ROTARY GEAR PUMPS

## DIMENSIONAL DATA 00-SERIES



### DIMENSIONS (INCHES)

Model	A	D	E	G	J	K	M	O	Keyway
00	1.888	3.00	.41	4.19	.38	1.63	.375	3/8-16	Flat

### OPERATING CHARACTERISTICS

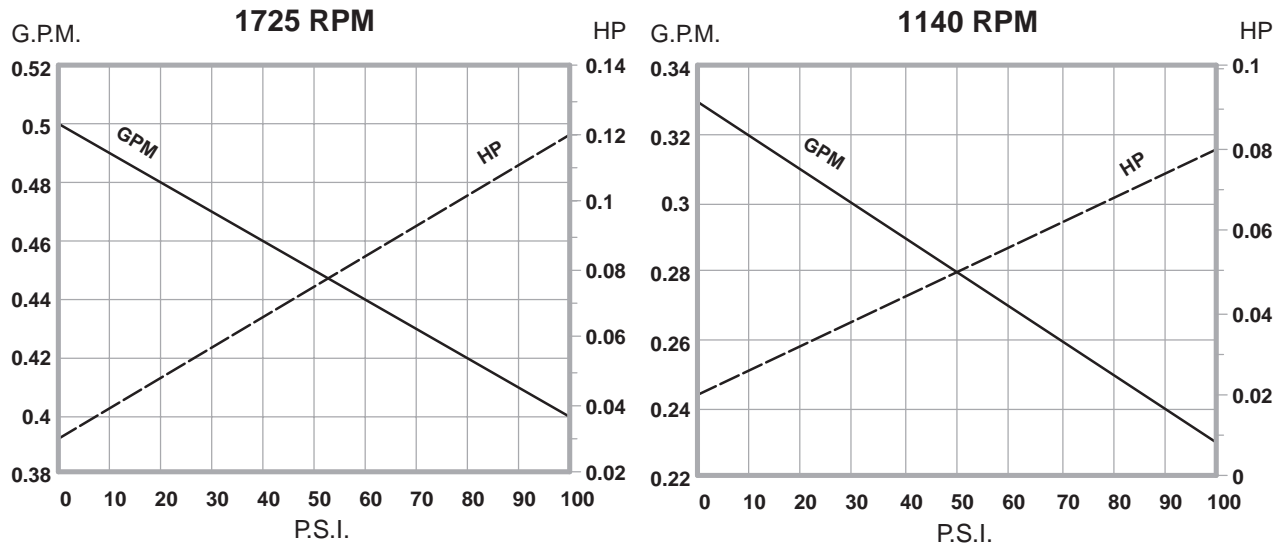
Model	Displmnt gals. per rev.	Slip gpm/psi	Drive Speed rpm	0 psi		50 psi		100 psi		200 psi		300 psi	
				gpm	hp	gpm	hp	gpm	hp	gpm	hp	gpm	hp
00	.00029	.0003	1140	.33	.013	.31	.036	.30	.062	.27	.110	.24	.159
			1725	.50	.020	.48	.056	.47	.093	.44	.165	.41	.238

\*Delivery and input horsepower are based on liquid viscosity of 300 ssu at speed and pressures shown.

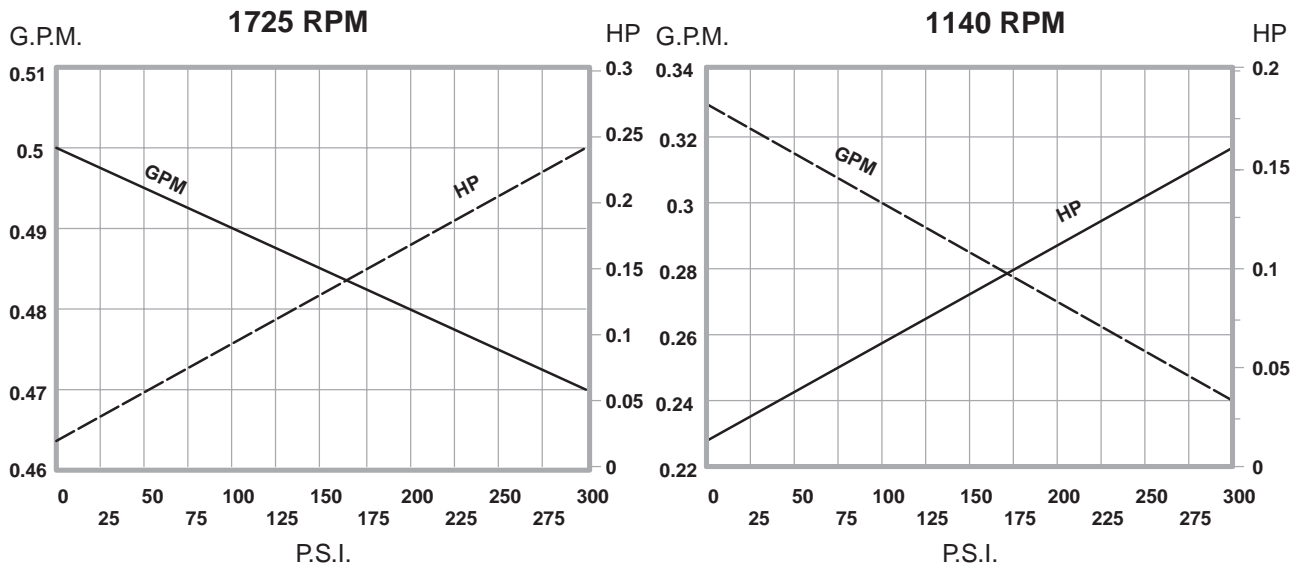
# BSM ROTARY GEAR PUMPS

## 00-SERIES

### OPERATING CHARACTERISTICS, 32 SSU LIQUID



### OPERATING CHARACTERISTICS, 300 SSU LIQUID

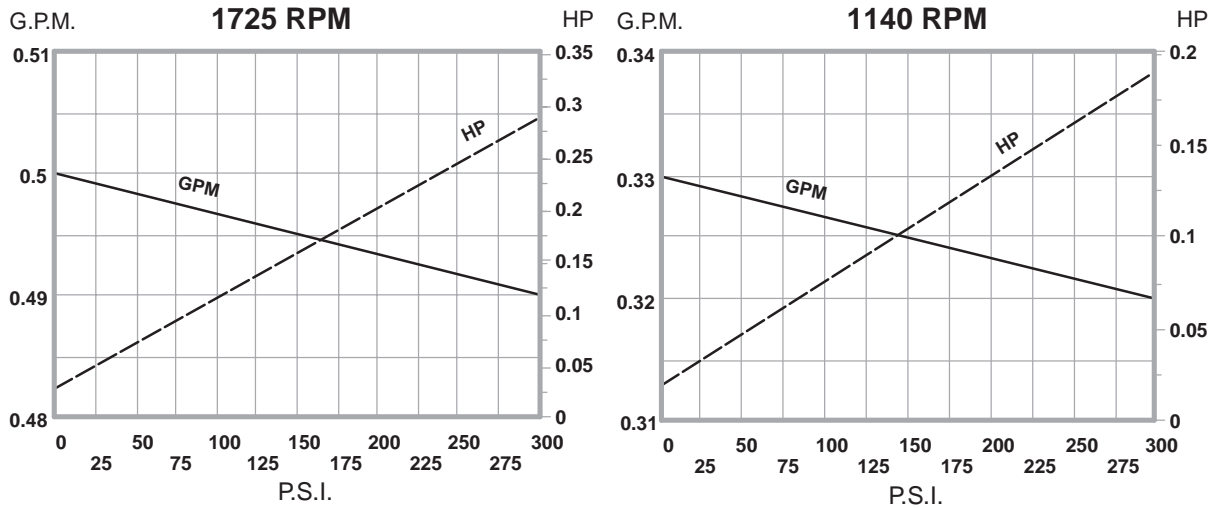


SOLID LINE = GPM  
BROKEN LINE = HP

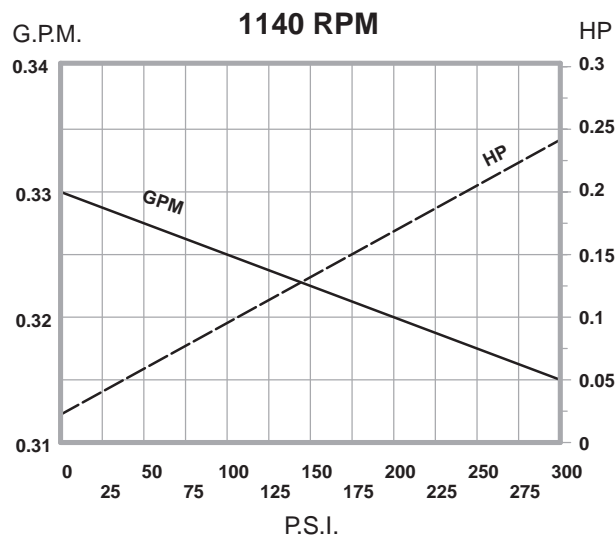
# BSM ROTARY GEAR PUMPS

## 00-SERIES

### OPERATING CHARACTERISTICS, 1,000 SSU LIQUID



### OPERATING CHARACTERISTICS, 1,750 SSU LIQUID

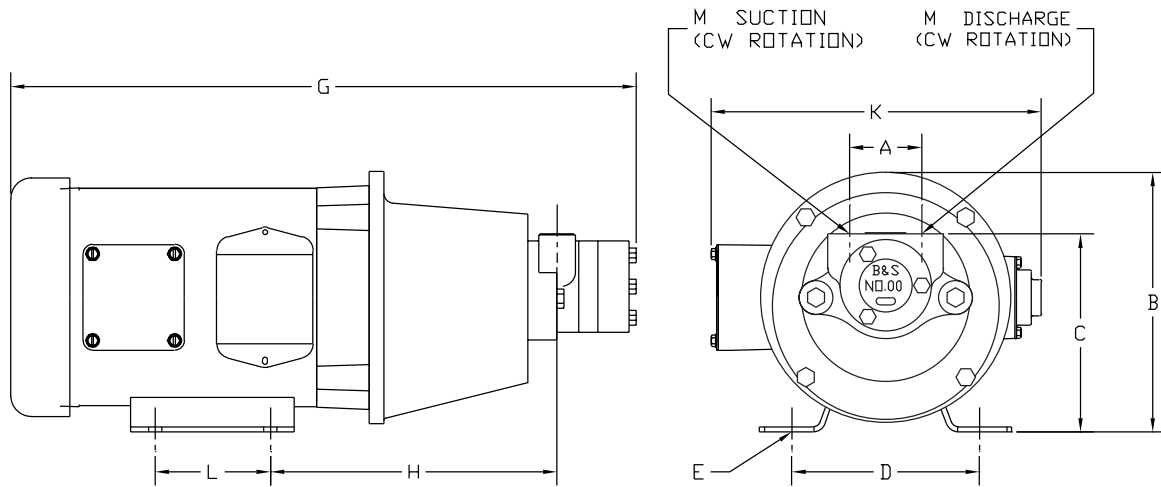


SOLID LINE = GPM  
BROKEN LINE = HP

# BSM ROTARY GEAR PUMPS

## 00-SERIES MOTOR DRIVEN ROTARY GEAR PUMPS (A-DRIVE)

BSM 00-Series pumps are available direct coupled to a Nema C-Face foot mounted motor. This assembly, referred to as an A-Drive, ensures accurate alignment and requires less space and is less costly than a pump and motor mounted on a baseplate. BSM 00-Series Motor Driven Rotary Gear Pumps are available in motor speeds of 860, 1140, 1725 rpm with capacities to 0.5 gpm and pressures to 300 psi.



### DIMENSIONS (INCHES)

Model No.	Motor Frame	A	B	C	D	E	G	H	K	L	M
00-A	42C	1.88	4.94	4.06	3.50	0.28	13.13	5.38	4.63	1.69	3/8
	56C	1.88	7.09	5.16	4.88	0.34	18.13	7.44	8.81	3.00	3/8